



COMMERCIAL PROJECT

COMPANIO

After successfully achieving a stepping stone in the World Of Wellness Products in India, the company wanted to share their success story by creating a corporate house which would highlight their Company's Brand value & its simultaneous growth as well as their technology in the given space.

STYLE

Industrial

LOCATION

Ahmedabad, India

AREA

15.030 sq.ft.

DESIGN CONCEPT

The design concept is rooted in the company's focus on wellness, translating its brand philosophy into a space that reflects growth, authenticity, and well-being. Nature forms the core theme, balanced with raw industrial elements to accommodate in-house manufacturing. This is expressed through exposed brick, concrete, metal, and natural materials like wood, stone, and indoor greenery. The facade becomes a brand statement, combining industrial finishes with a climber-covered metal frame to symbolize organic growth. Interiors are open, calming, and connected — from the marble-clad reception and lotus pond to relaxed breakout and collaborative zones.



MATERIAL BOARD

This material board reflects a nature-driven, wellness-focused, and industrial-modern approach. Natural textures like wooden slats and rattan fabric are used in meeting and breakout areas for warmth and calm. Veined marble and dark granite add sophistication to the reception desk and countertops, while exposed brick and concrete emphasize a raw industrial aesthetic in the façade and walls. Matte black and brass metal finishes

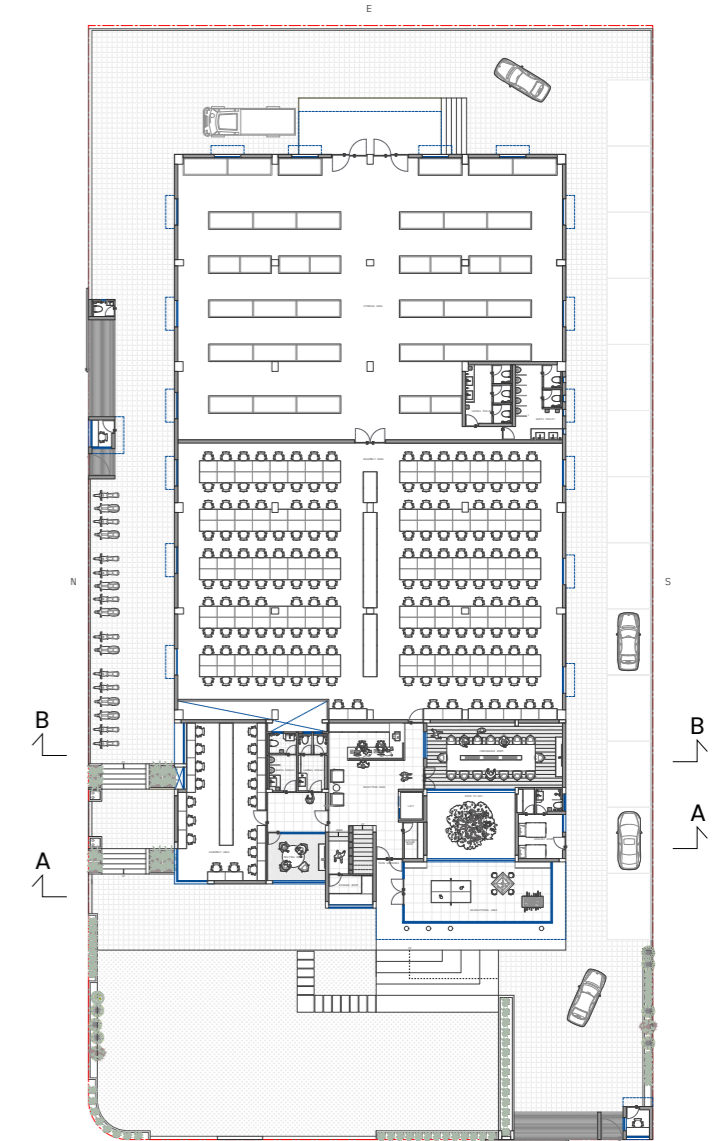
highlight fixtures and structural accents with a modern touch. Blue vertical tiles bring serenity to wellness zones and restrooms. Terrazzo and encaustic tiles add playful pattern in product display and café corners. Upholstery in green and plum, along with a neutral woven rug, softens lounge and collaborative areas — creating a cohesive, tactile, and brand-aligned interior.



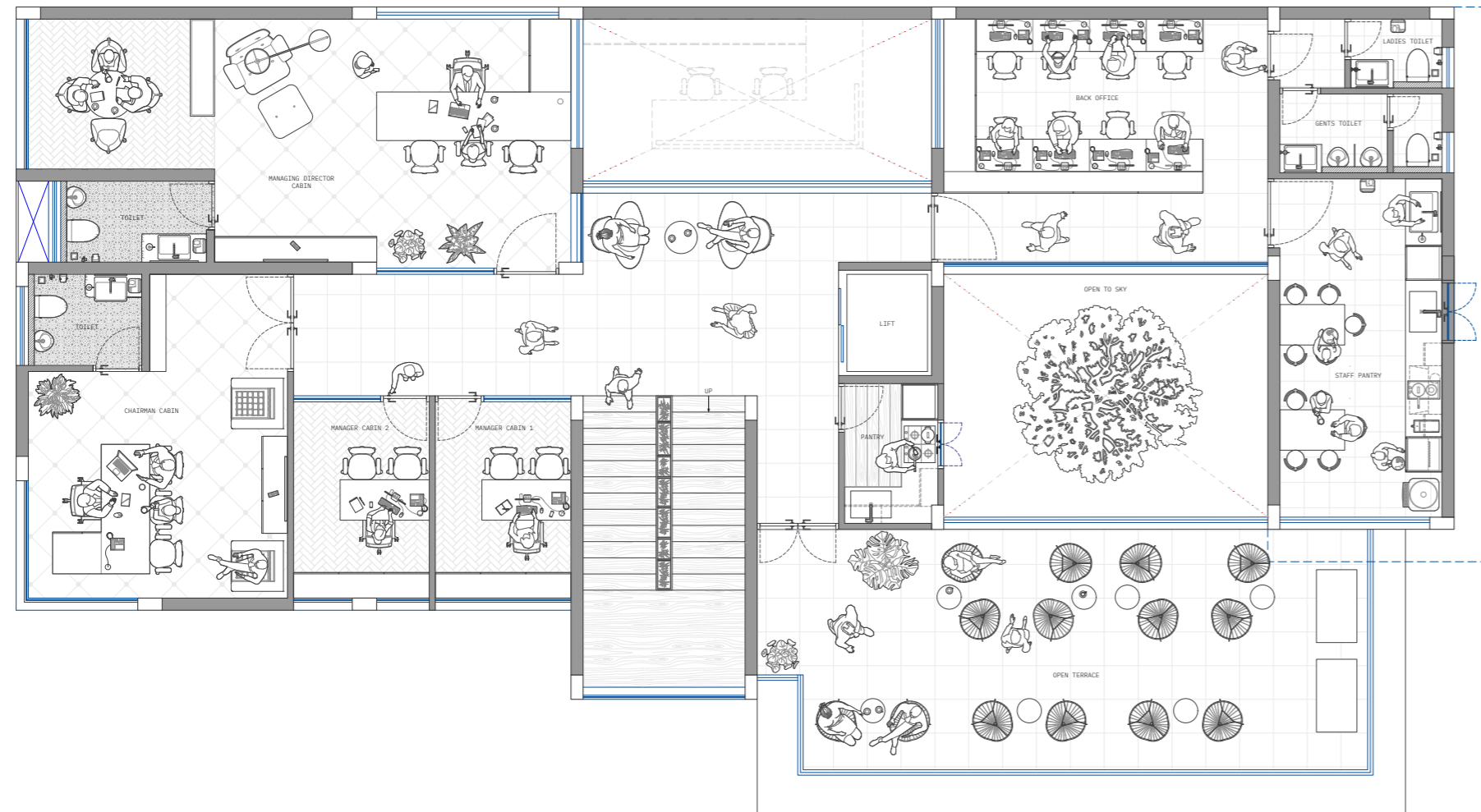
RESPONSIBILITIES

As the Interior Architect for this commercial corporate space, I led the complete design development - from concept to execution. I crafted a design narrative rooted in the brand's wellness philosophy and growth story, translating it into spatial layouts, material palettes, and custom furniture solutions. My responsibilities included curating mood and material boards, designing custom, ergonomic and aesthetic furniture pieces; and selecting finishes that merged industrial-modern, rustic, and natural elements. I coordinated closely with structural and MEP teams to integrate design and services seamlessly, while also producing detailed joinery drawings and overseeing on-site execution to maintain design integrity and ensure seamless translation from concept to completion.

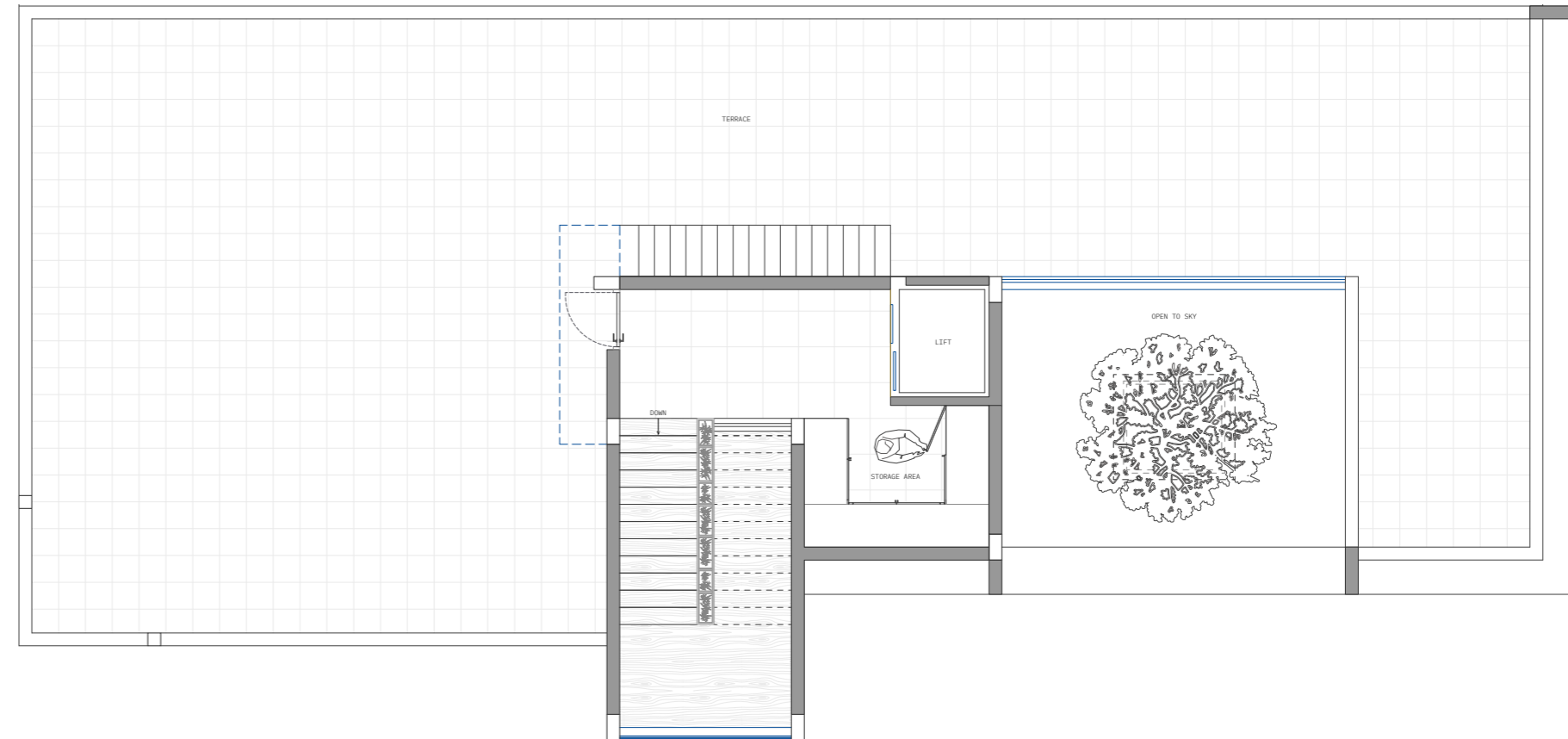
GROUND FLOOR



FIRST FLOOR



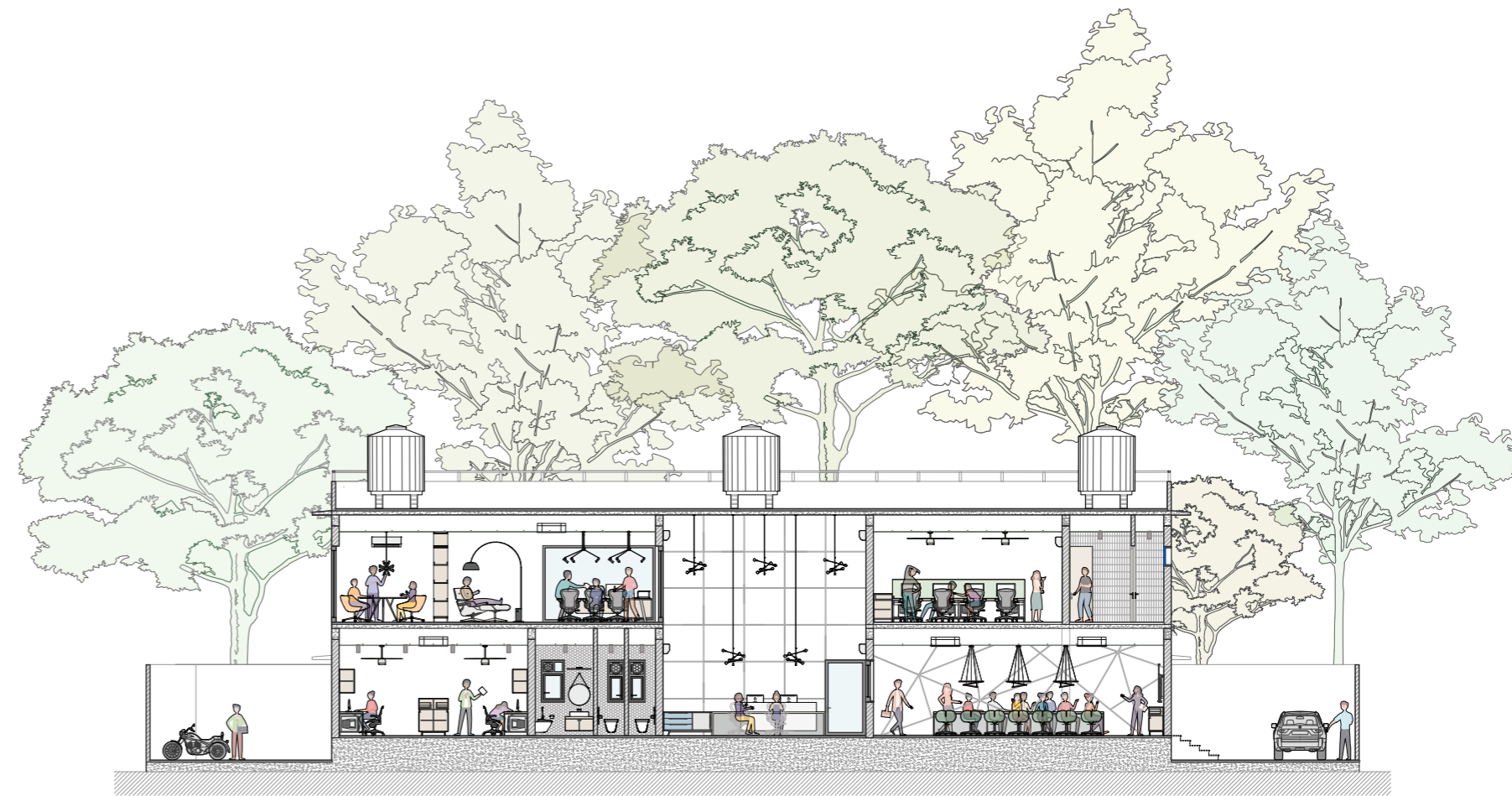
SECOND FLOOR



SECTION A



SECTION B



VISUAL PRESENTATION

