



RESIDENTIAL PROJECT

HOFLEVEN

A young tech entrepreneur with a passion for simplicity and efficiency, the client envisioned a modern minimalist home that seamlessly integrates advanced technology with refined aesthetics. He sought a space that is not only visually serene but also fully equipped with high-end appliances, smart home automation, and custom-built storage solutions to enhance functionality.

Collaborating with Interior Architect **Angelika Barzilej**, I played a key role in conceptualizing and designing the spatial layout, ensuring fluid circulation, a harmonious material palette, and meticulously detailed millwork. The result is a sophisticated yet highly efficient living space that embodies contemporary luxury while catering to the client's dynamic lifestyle.

STYLE

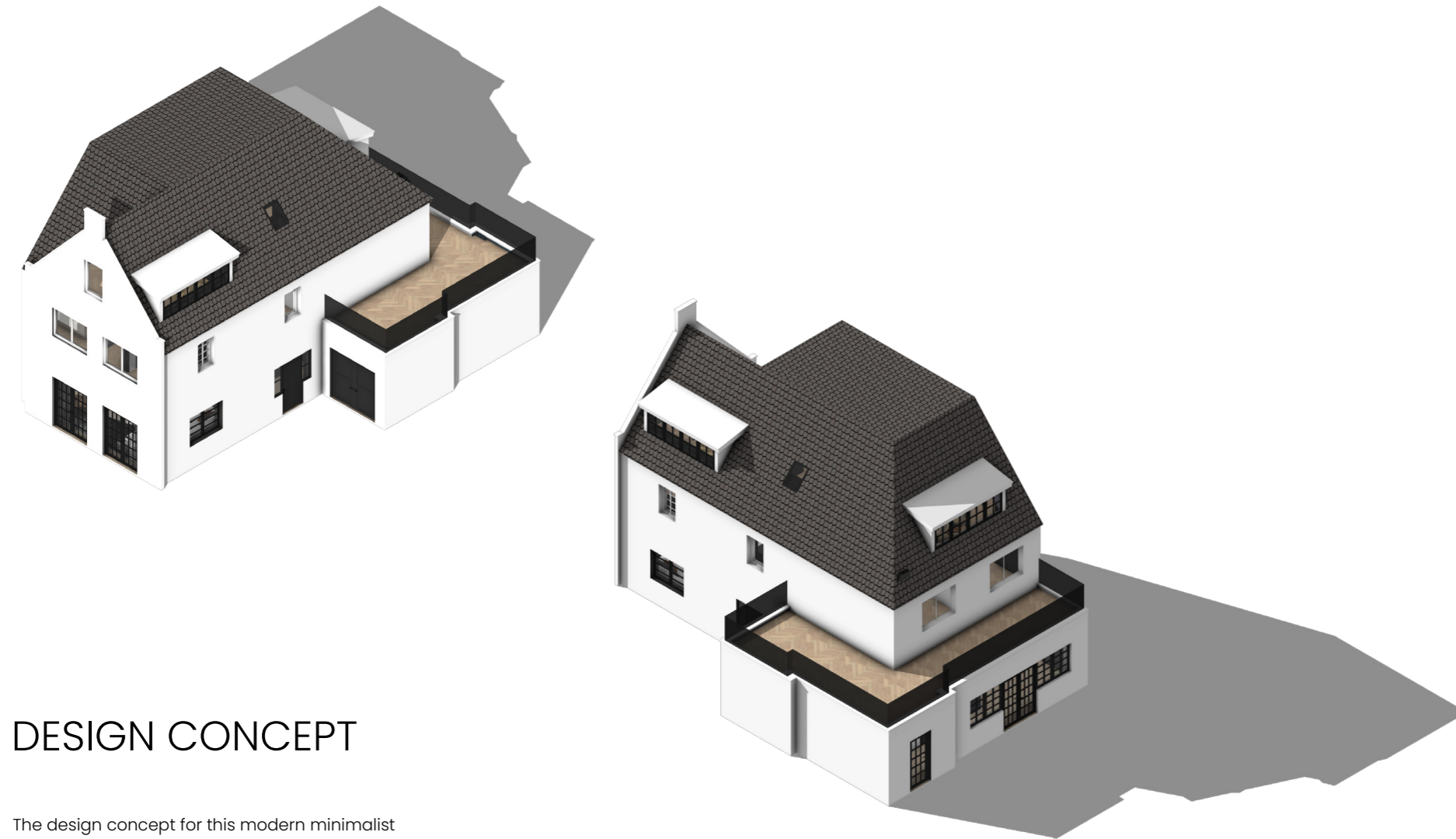
Modern

LOCATION

Den Haag, Nederland

AREA

156 sq.mt.



DESIGN CONCEPT

The design concept for this modern minimalist home revolves around simplicity, functionality, and understated luxury. Spatial clarity is achieved through open-plan layouts, integrated storage solutions, and seamless transitions between different functional zones. The design also incorporated smart home automation for lighting, climate control, and security, elevating convenience and efficiency. The client envisioned a modern minimalist home

that seamlessly integrates high-end functionality with a refined aesthetic. This vision formed the foundation of our design concept, where clean architectural lines, a muted yet rich material palette, and smart spatial planning were key elements.

RESPONSIBILITIES

As an assistant Interior Architect on this residential project, I worked closely with Angelika Barziley to help realize the client's vision of a modern minimalist home. My responsibilities included supporting the development of the overall design concept, assisting in space planning to ensure functional and efficient layouts, and contributing to the selection of materials and finishes that aligned with the minimalist aesthetic. I played a key role in integrating smart home automation features seamlessly into the design and helped create custom storage solutions that enhanced usability without disrupting the clean visual language. I prepared detailed technical drawings, 3D visualizations, and design documentation to support communication with consultants and contractors. Throughout the project, I worked to ensure that all tasks aligned with the design direction and were executed to a high standard.



MATERIAL BOARD

Along with with interior architect Angelika Barziley, we crafted an interior that balances minimalism with warmth through the use of black wood veneer, tinted glass, and subtle gold mosaic accents, creating a refined yet warm atmosphere. Lighting played a crucial role in defining the ambiance, with indirect LED strips and recessed spotlights enhancing spatial depth while maintaining a soft, atmospheric glow. Custom-built cabinetry,

integrated storage solutions, and concealed appliances ensured a clutter-free environment, reinforcing the home's sleek and contemporary character. The wellness-inspired attic space was designed with bespoke sauna elements, custom shelving, and indirect mood lighting to create a serene retreat within the home.

FRONT ELEVATION



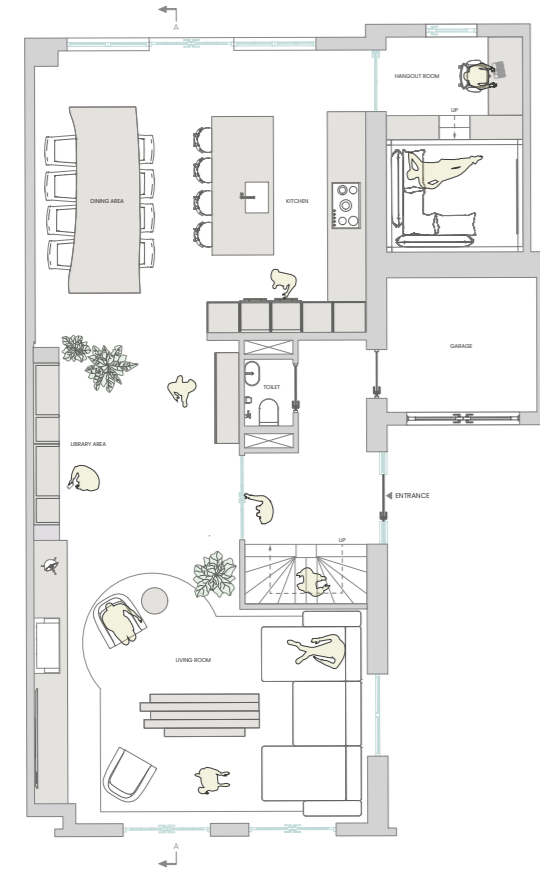
BACK ELEVATION



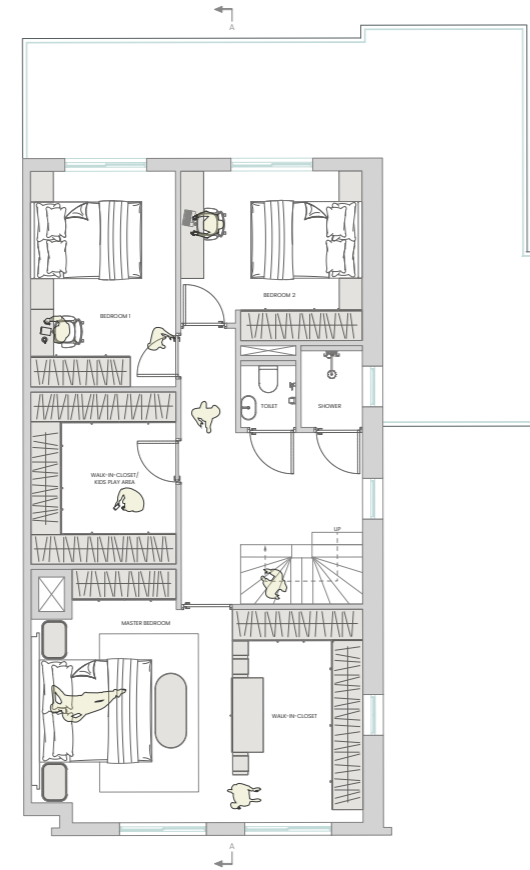
FLOOR LAYOUT PLANS

SECTION AA

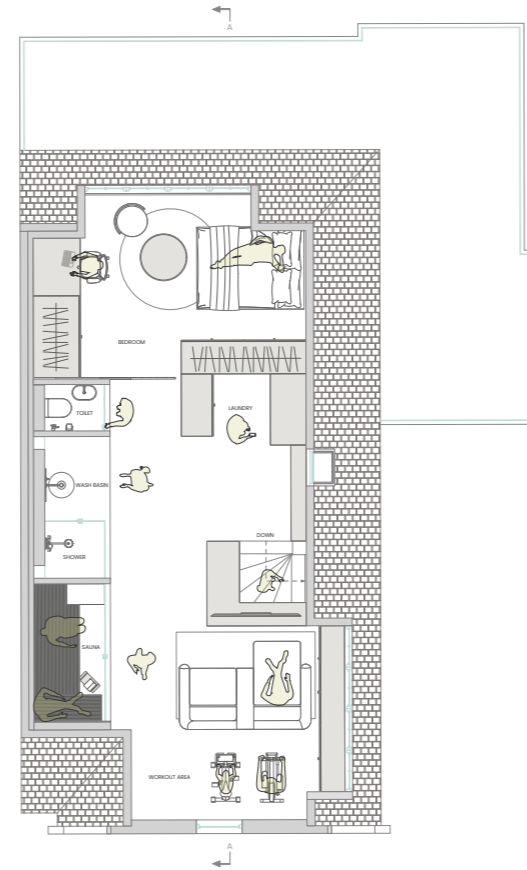
GROUND FLOOR



FIRST FLOOR



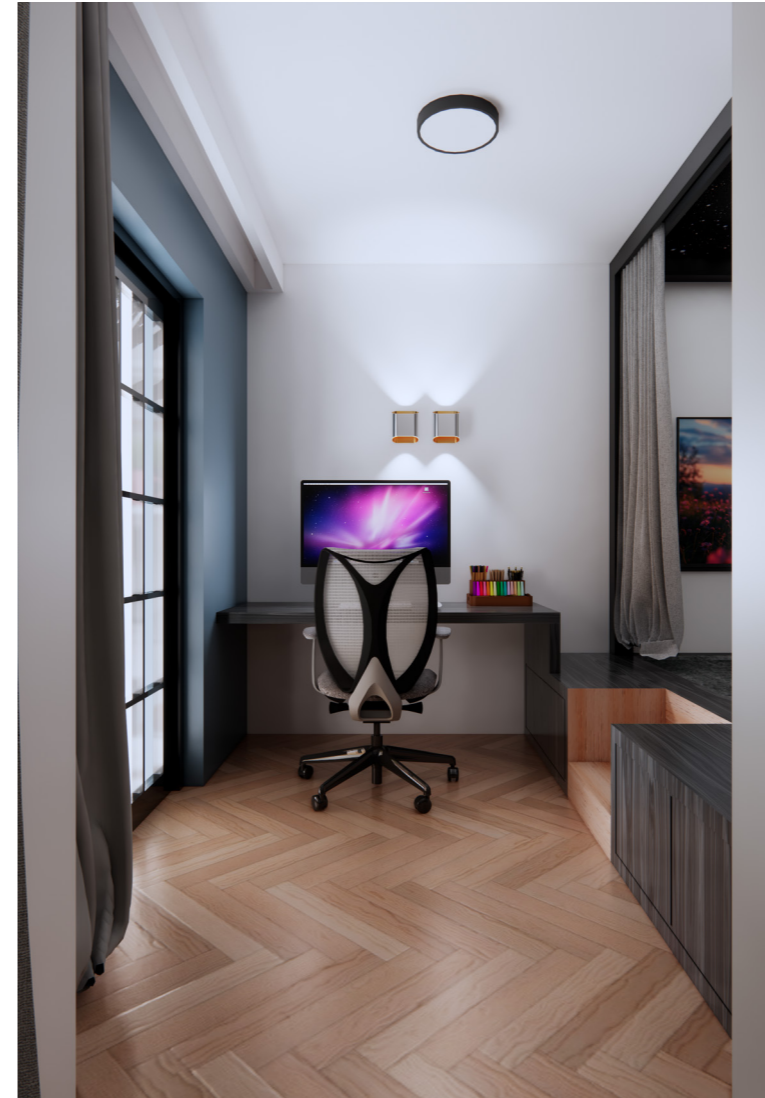
SECOND FLOOR



LIVING ROOM - VISUALISATION



HANGOUT ROOM - VISUALISATION



MASTER BEDROOM – VISUALISATION



ZOLDER – VISUALISATION

