



RESIDENTIAL PROJECT

OPULENCE

The brief was to design the dressing room in a modern & luxurious way. I tried to divide the space into two different spaces as per its functions. So, as you enter, you get into a dressing room with dressing unit & a settee. On one side of the dressing unit, there is a set of drawers for shoes & on other side, wardrobes for regular used clothes. The other space is defined specifically for the walk-in-closed-closet for the client's expensive taste in lifestyle accessories as well as clothes.

STYLE

Modern

LOCATION

Ahmedabad, India

AREA

39 sq.mt.

DESIGN CONCEPT

The Opulence project was envisioned as a modern and luxurious dressing space, thoughtfully divided into two functional zones - a dressing room for daily use and a walk-in closet tailored to the client's lifestyle and love for high-end accessories. The design emphasizes spatial fluidity, privacy, and visual elegance. The dressing area features a niche-integrated settee and an angled mirror unit for practical accessibility, while the walk-in closet is designed with symmetrical wardrobe arrangements and open access. The concept balances comfort with sophistication, using smart storage planning and seamless transitions between functional zones to elevate the user experience.

RESPONSIBILITIES

As the Interior Architect, I handled the entire design process from concept and layout to execution. I developed the spatial arrangement, created rendered visuals, curated the material board, and prepared detailed technical drawings. I designed wardrobe internals, including ergonomic drawer heights, pull-down hangers, mirror positioning, and loft storage with ladder access. I selected finishes, integrated lighting, and ensured functional zoning aligned with the client's luxury lifestyle.



MATERIAL BOARD

The material palette was curated to express modern minimalism with a luxurious undertone. Wardrobes are finished in grey PU suede, offering a clean and soft texture, while teak wood drawers add warmth and contrast. Handle-less doors with horizontal wooden profiles enhance the modern look with a subtle design rhythm. The walk-in closet includes

glass-panel wardrobes framed in black powder-coated aluminum with vertical handles, providing a sleek, high-end appeal. Internal lighting, consistent with loft finishes, and open shelves ensure visibility and cohesion. Altogether, the materials deliver a tactile, refined experience that is both functional and visually seamless.



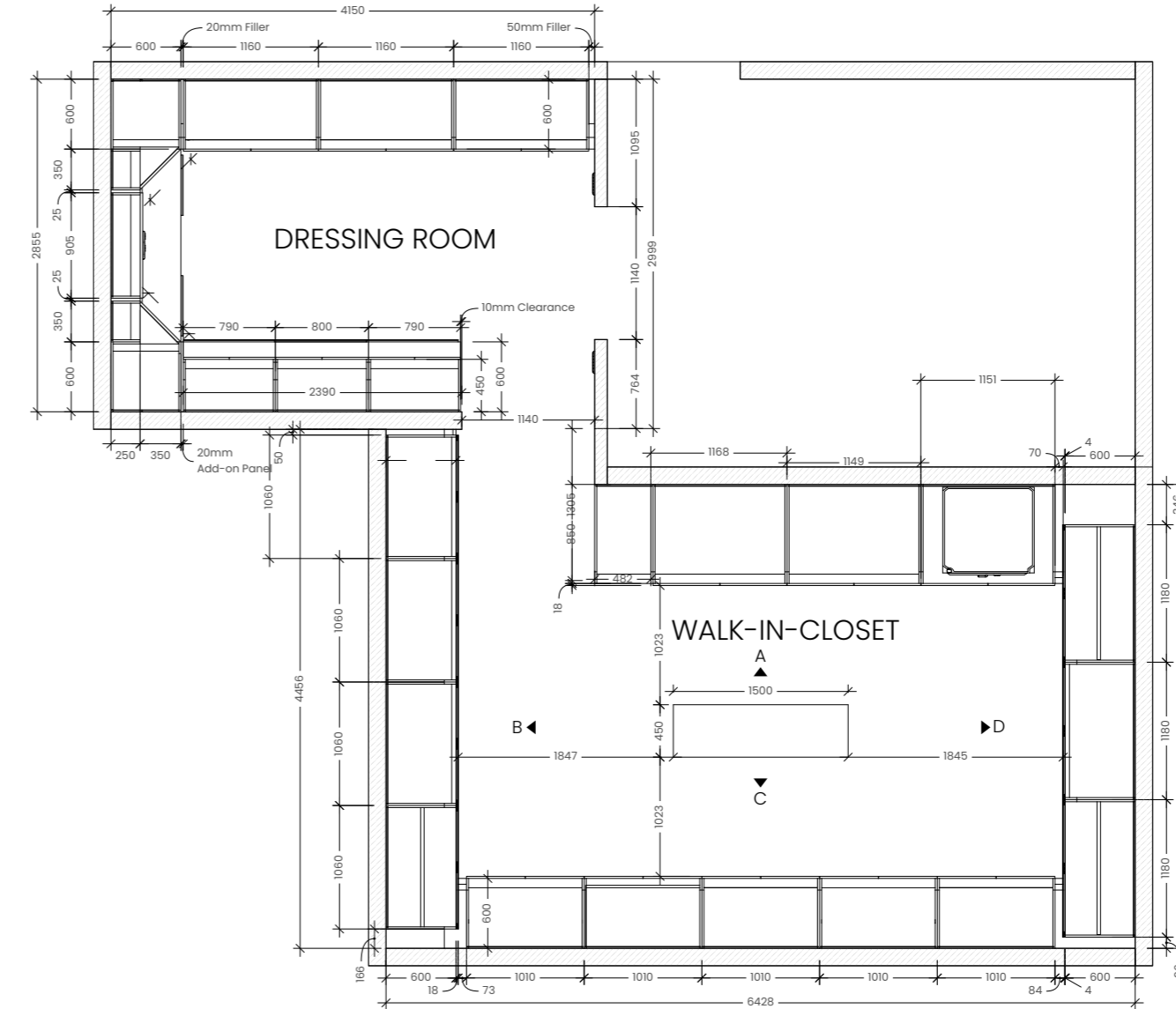
DRESSING ROOM LAYOUT

This space is designed to have an everyday accessibility for regular accessories & clothes. The dressing unit has a niche designed specifically for the settee which fits inside the niche when not in use to create a clean look.



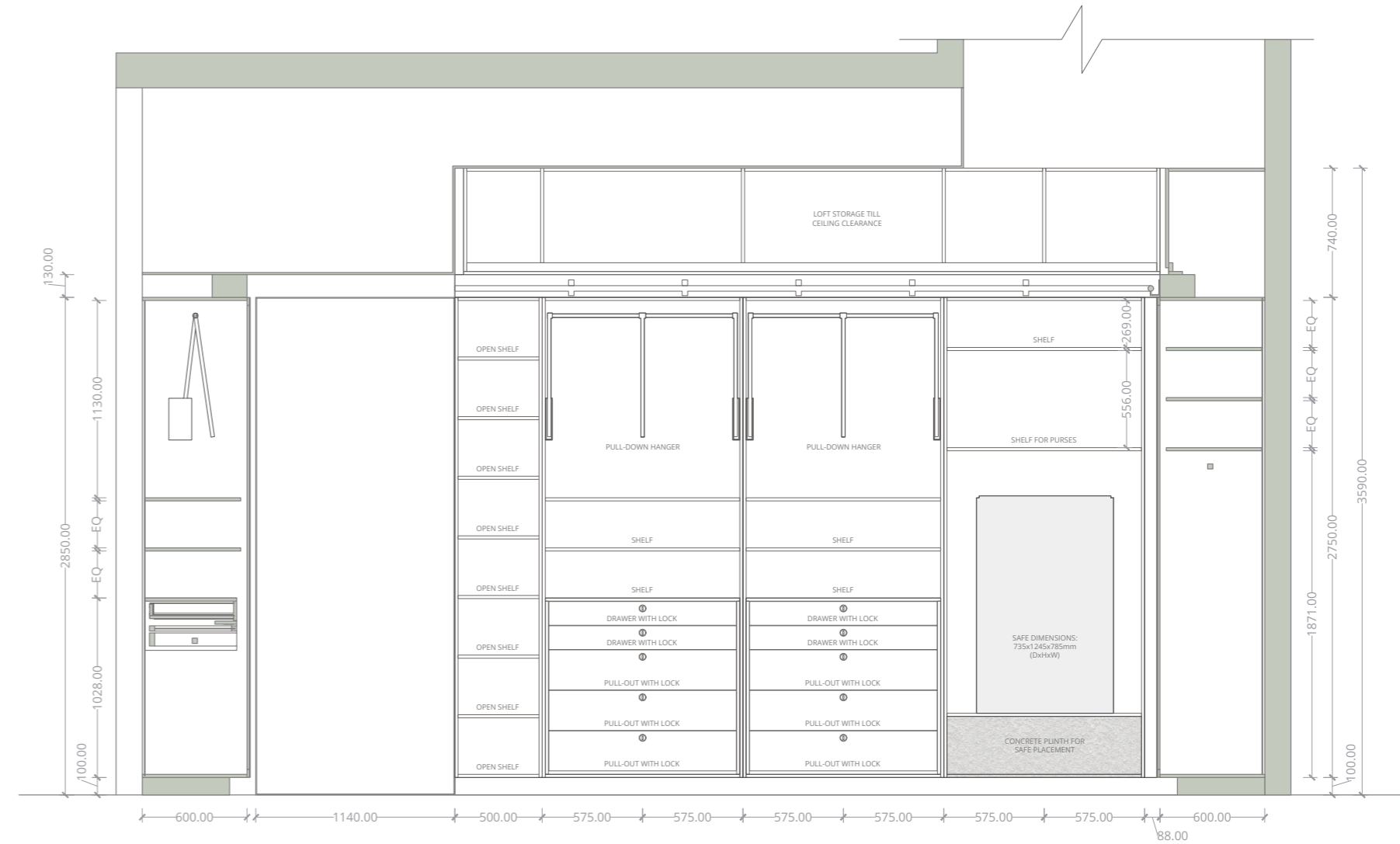
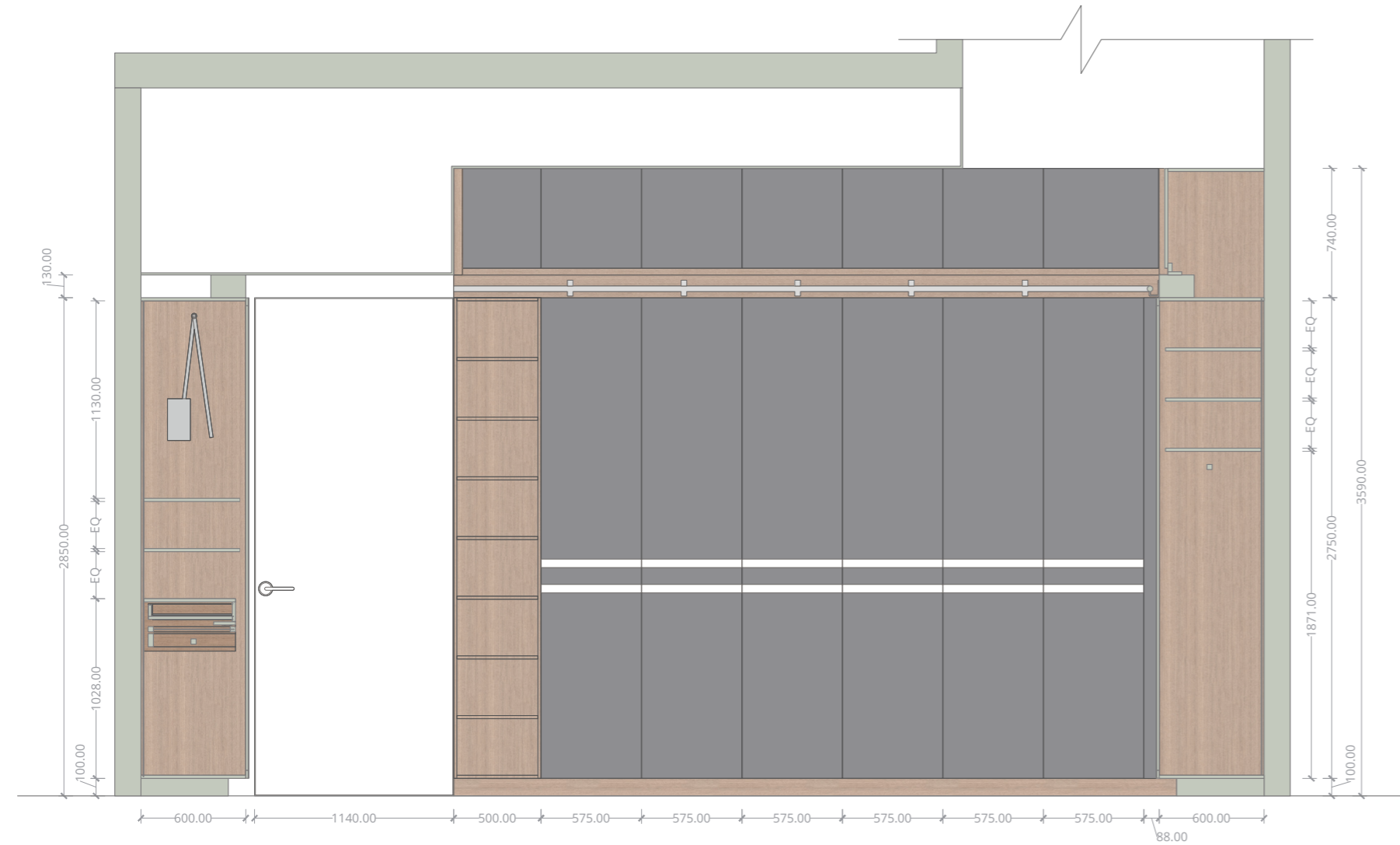
DRESSING ROOM DIMENSIONS

Note: Wardrobe Height till Lintel level. Lintel Height is considered 2850. Plinth Height is 100mm & Wardrobe height is 2750mm. Total: Plinth + Wardrobe (100mm + 2750mm) = Lintel Height (2850mm)

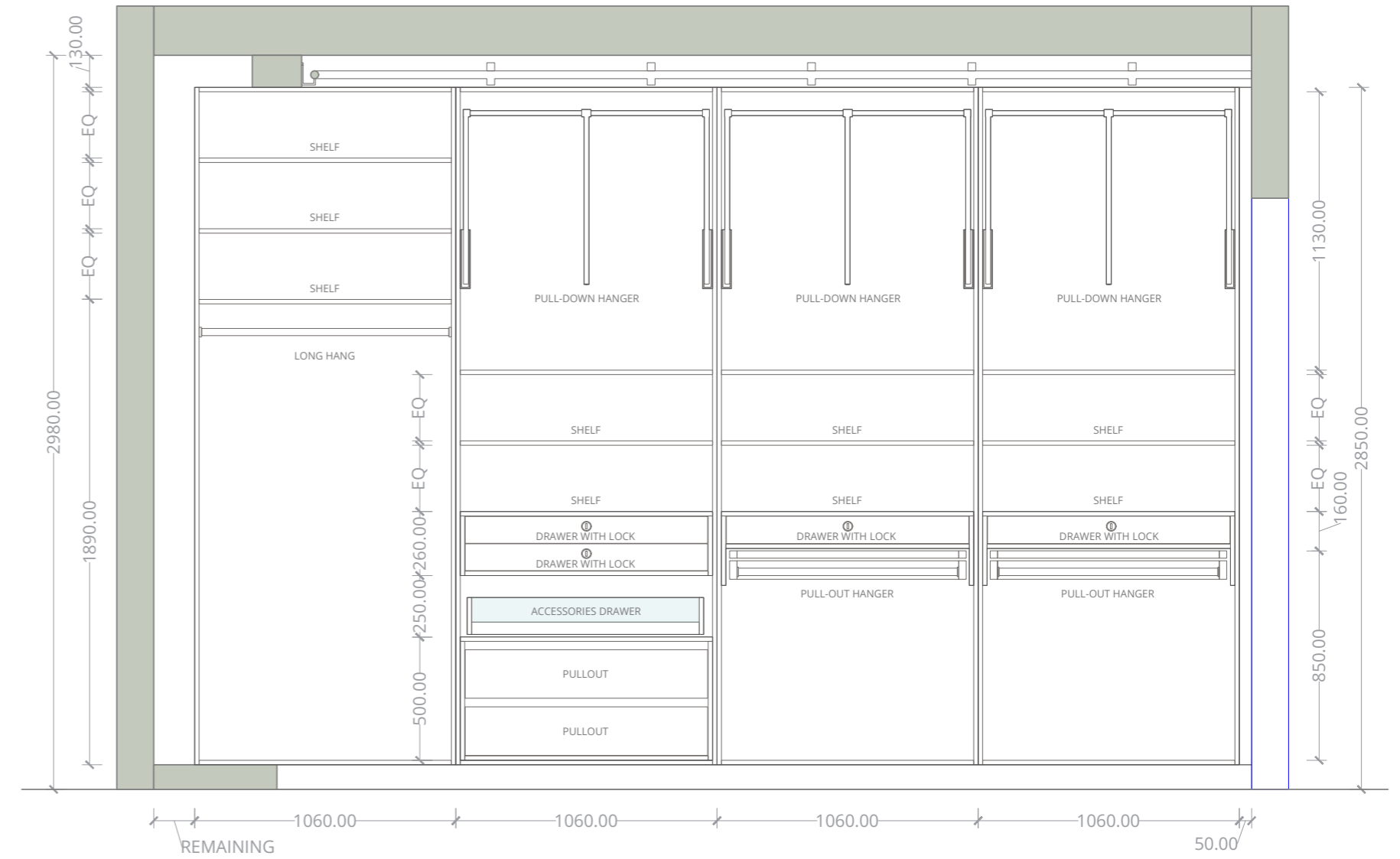
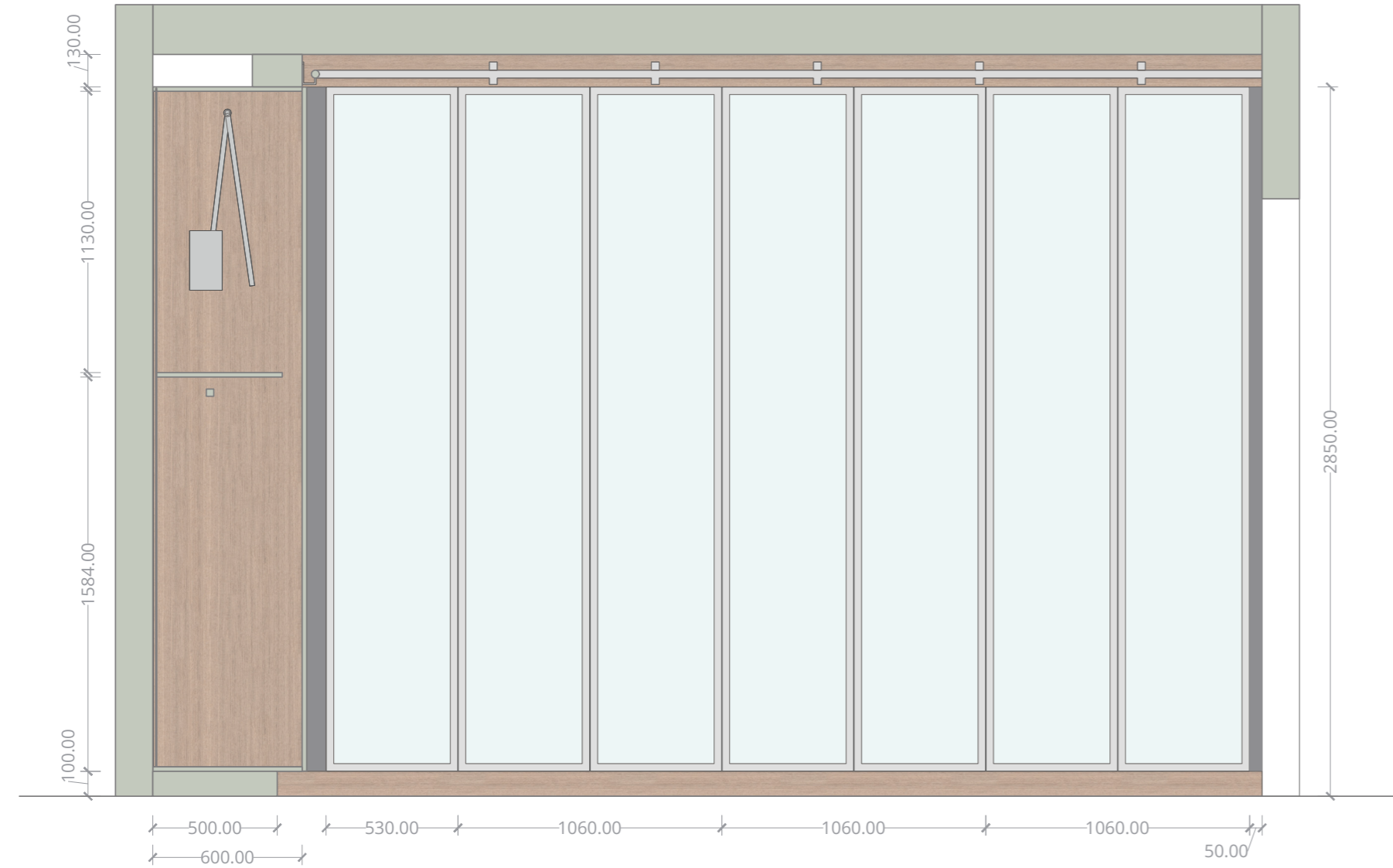


NOTE: ALL DIMENSIONS ARE IN MILLIMETERS. TO BE CHECKED BEFORE AND DURING CONSTRUCTION.

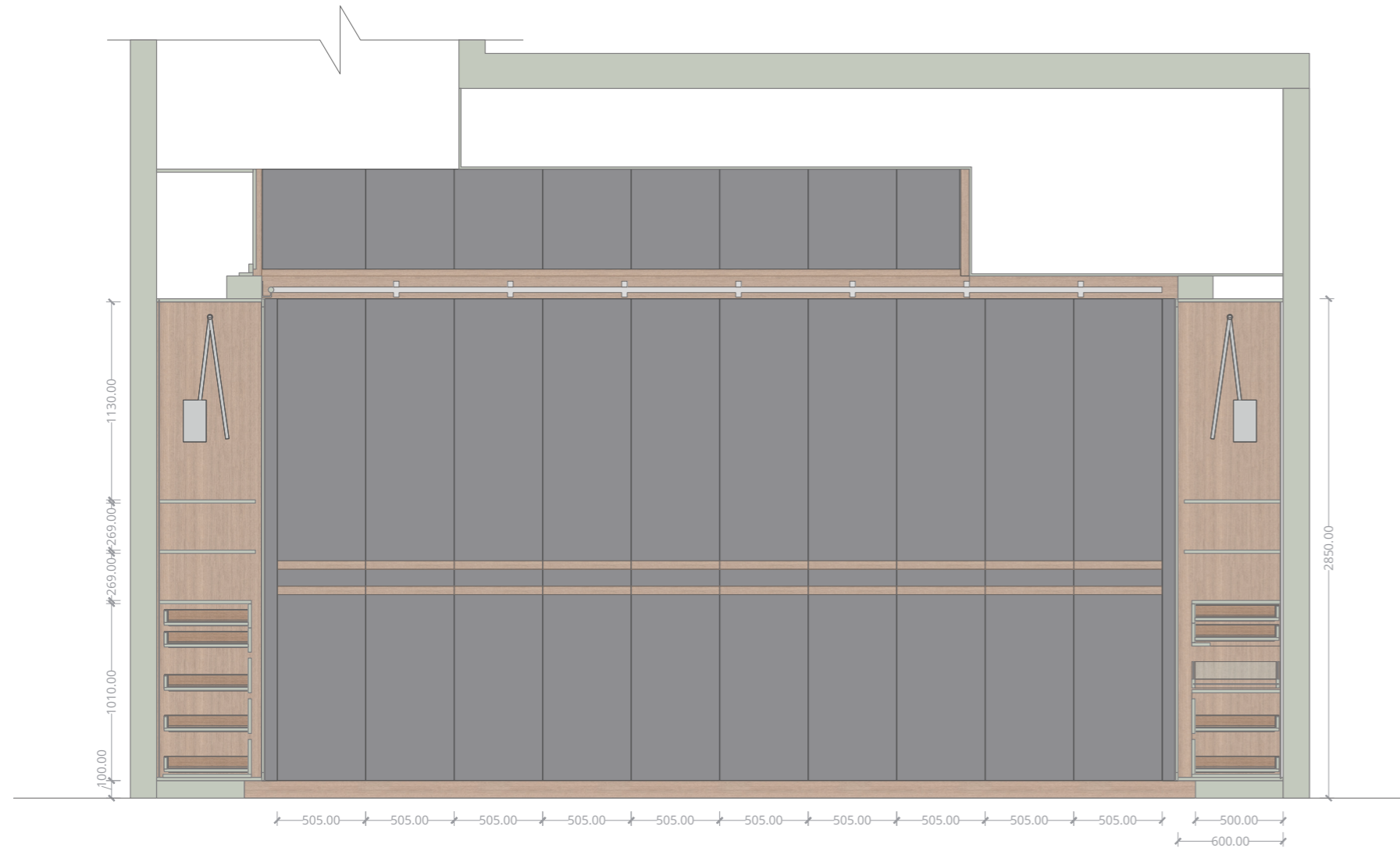
SECTION A



SECTION B



SECTION C



SECTION D

